



As a next-generation converged PON technology, iXL series Chassis OLT provide GPON, XG-PON, XGS-PON, Combo PON access, and 100GE/25GE/10GE/GE uplinks. The device can be deployed in FTTH, FTTB, FTTC, FTTD, FTTM scenarios to provide service for residential subscribers, business customers, mobile and fixed backhauling, Wi-Fi hotspot backhaul, etc. The iXL series OLT include the following two models, which conform to ITU-T international standards.

Key Benefits

Unified Element Management System

The unified, centralized and large-capacity element management system (EMS) adopts a micro-service architecture, which can be deployed on physical or cloud platforms and expanded easily.

Unified Platforms for Different PON Cards

Provide GPON, XG-PON, XGS-PON and Combo PON cards with different rates. Each OLT's PON port can support the splitting ratio up to 1:128 (for GPON) and 1:256 (for XG(S)-PON). The maximum transmission distance is 20 kilometers.

Full Series Products

Provide full series of OLT products with different switch capacities and different sizes (2U, 7U), to meet various application scenarios of customers.



iXL2700 Chassis System

iXL2700-S7	Chassis (7U Front-access) with Backplane, Installation accessories, no Fan tray
iXL2700-FAN3	Fan tray
iXL2700-PCU1S	Peripheral Control Unit
iXL2700-PDC1A	Power supply card
iXL2700-DCCABLE	DC Power Cable Assy, 3m, OT16-6 to Open, 16mm ² , Blue Black
iXL2700-CSM3S	Control & Switching Module, 4*25GE/10GE uplink

iXL2200 Chassis System

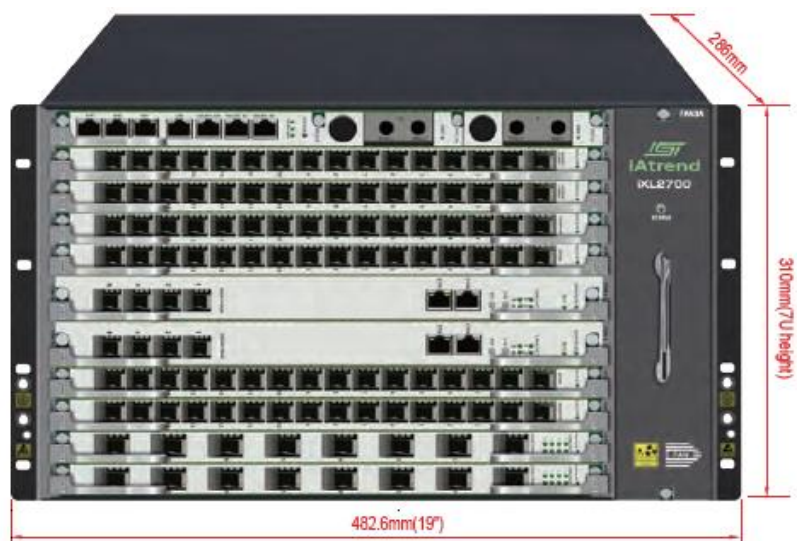
iXL2200-S2	Chassis (2U Front-access) with Backplane, Installation accessories, Fan tray
iXL2200-FAN2A	Fan tray
iXL2200-CSM2S	Control & Switching Module, 4*10GE/GE uplink
iXL2200-PDC1C	DC Power supply module
iXL2200-PAC1C	AC Power supply module
iXL2200-DCCABLE	DC Power Cable Assy, 3m, DB connector to Open, 6mm ² , Blue Black
iXL2200-ACCABLE	AC Power Cable Assy, 2.5m, 3Pin Plug to 3Pin Receptacle, N.America standard plug, 3x1.0mm ² , Black
iXL2200-FCS	Blank Faceplate for CSM Slots of iXL2200

Service Cards

iXL2200-XSM2C	16*XG(S)PON&GPON Combo ports for iXL2200/iXL2700
iXL2200-XSM2A	8*XG(S)PON&GPON Combo ports for iXL2200/iXL2700
iXL2200-XGS1C	16*XGSPON/XGPON ports for iXL2200/iXL2700
iXL2200-GPN4C	16*GPON ports for iXL2200/iXL2700
iXL2200-XUC1A	8*25GE/10GE/GE ports for iXL2200/iXL2700
iXL2200-HUC1D	2*100GE ports for iXL2200/iXL2700
iXL2200-FSS	Blank Faceplate of Service Slots for iXL2200/iXL2700

Product Model	iXL2700	iXL2200
Service Slots No.	8	2
Dimensions (mm)(WxDxH)	482.6x286x310 (19-inch width, 7U height)	482.6x286x88 (19-inch width, 2U height)
Weight	Full of cards:28 kg Chassis only:11.5 kg	Full of cards:10 kg Chassis only:4.5 kg
CSM Switching Capacity	7.2 Tbps	960 Gbps
Power Supply	DC(1+1 redundancy)	DC/AC(1+1 redundancy)
Typical Consumption	754 W	308 W
Reliability	CSM 1+1 redundancy / PON Protection	CSM 1+1 redundancy / PON Protection
Max No. of GPON Port	128	32
Uplink Port No. (CSM)	2*4*25GE/10GE	2*4*10GE/GE

Operating Temperature	0 to 40°C	0 to 40°C
Operating Humidity	10 to 90% (non-condensing)	10 to 90% (non-condensing)
Storage Temperature	-40 to +70°C	-40 to +70°C
Storage Humidity	5 to 95% (non-condensing)	5 to 95% (non-condensing)



Taiwan:

3F-1, No.10, Lane 609, Chongxin Road, Section 5, Sanchong Dist, New Taipei City 241405, Taiwan
Tel: +886-2-29998261

India:

446 Sector 8, IMT Manesar, Gurugram, Haryana 122051, India
E-mail: India.admin@comtrend.com

USA & Canada:

530 Technology Dr. Suite 100, Irvine, CA 92618, USA
Tel: +1-949-753-9640

Spain:

comercial@comtrend.com

Czech Republic:

TOKOVO Jankovcova 1518/2, 170 00, Prague 7, Czech Republic
Tel: +420-266-782040

Maximum performance, actual data rates, and coverage will vary depending on network conditions and environmental factors. Product specifications and design are subject to change without notice.