



As a next-generation converged PON technology, iXL series Chassis OLT provide GPON, XG-PON, XGS-PON, Combo PON access, and 100GE/25GE/10GE/GE uplinks. The device can be deployed in FTTH, FTTB, FTTC, FTTD, FTTM scenarios to provide service for residential subscribers, business customers, mobile and fixed backhauling, Wi-Fi hotspot backhaul, etc. The iXL series OLT include the following two models, which conform to ITU-T international standards.

## Key Benefits

### Unified Element Management System

The unified, centralized and large-capacity element management system (EMS) adopts a micro-service architecture, which can be deployed on physical or cloud platforms and expanded easily.

### Unified Platforms for Different PON Cards

Provide GPON, XG-PON, XGS-PON and Combo PON cards with different rates. Each OLT's PON port can support the splitting ratio up to 1:128 (for GPON) and 1:256 (for XG(S)-PON). The maximum transmission distance is 20 kilometers.

### Full Series Products

Provide full series of OLT products with different switch capacities and different sizes (2U, 7U), to meet various application scenarios of customers.



## iXL2700 Chassis System

iXL2700-S7	Chassis (7U Front-access) with Backplane, Installation accessories, no Fan tray
iXL2700-FAN3	Fan tray
iXL2700-PCU1S	Peripheral Control Unit
iXL2700-PDC1A	Power supply card
iXL2700-DCCABLE	DC Power Cable Assy, 3m, OT16-6 to Open, 16mm <sup>2</sup> , Blue Black
iXL2700-CSM3S	Control & Switching Module, 4*25GE/10GE uplink

## iXL2200 Chassis System

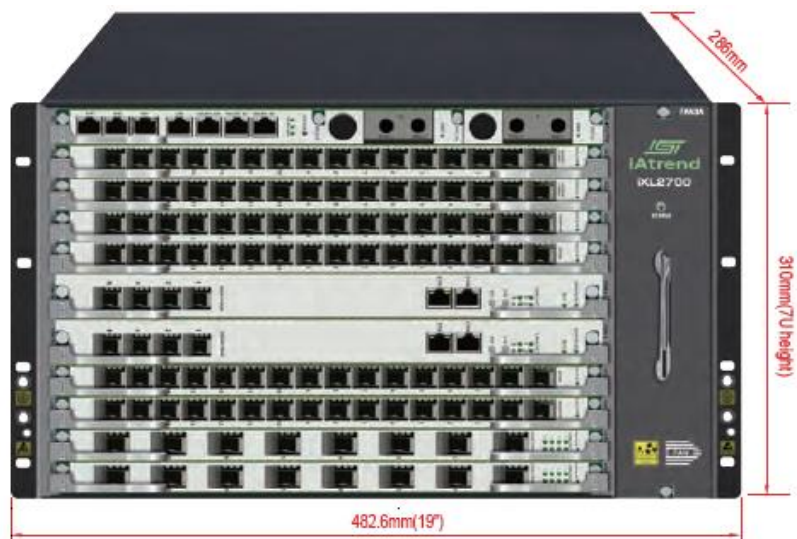
iXL2200-S2	Chassis (2U Front-access) with Backplane, Installation accessories, Fan tray
iXL2200-FAN2A	Fan tray
iXL2200-CSM2S	Control & Switching Module, 4*10GE/GE uplink
iXL2200-PDC1C	DC Power supply module
iXL2200-PAC1C	AC Power supply module
iXL2200-DCCABLE	DC Power Cable Assy, 3m, DB connector to Open, 6mm <sup>2</sup> , Blue Black
iXL2200-ACCABLE	AC Power Cable Assy, 2.5m, 3Pin Plug to 3Pin Receptacle, N.America standard plug, 3x1.0mm <sup>2</sup> , Black
iXL2200-FCS	Blank Faceplate for CSM Slots of iXL2200

## Service Cards

iXL2200-XSM2C	16*XG(S)PON&GPON Combo ports for iXL2200/iXL2700
iXL2200-XSM2A	8*XG(S)PON&GPON Combo ports for iXL2200/iXL2700
iXL2200-XGS1C	16*XGSPON/XGPON ports for iXL2200/iXL2700
iXL2200-GPN4C	16*GPON ports for iXL2200/iXL2700
iXL2200-XUC1A	8*25GE/10GE/GE ports for iXL2200/iXL2700
iXL2200-HUC1D	2*100GE ports for iXL2200/iXL2700
iXL2200-FSS	Blank Faceplate of Service Slots for iXL2200/iXL2700

Product Model	iXL2700	iXL2200
Service Slots No.	8	2
Dimensions (mm)(WxDxH)	482.6x286x310 (19-inch width, 7U height)	482.6x286x88 (19-inch width, 2U height)
Weight	Full of cards:28 kg Chassis only:11.5 kg	Full of cards:10 kg Chassis only:4.5 kg
CSM Switching Capacity	7.2 Tbps	960 Gbps
Power Supply	DC(1+1 redundancy)	DC/AC(1+1 redundancy)
Typical Consumption	754 W	308 W
Reliability	CSM 1+1 redundancy / PON Protection	CSM 1+1 redundancy / PON Protection
Max No. of GPON Port	128	32
Uplink Port No. (CSM)	2*4*25GE/10GE	2*4*10GE/GE

Operating Temperature	0 to 40°C	0 to 40°C
Operating Humidity	10 to 90% (non-condensing)	10 to 90% (non-condensing)
Storage Temperature	-40 to +70°C	-40 to +70°C
Storage Humidity	5 to 95% (non-condensing)	5 to 95% (non-condensing)



**Taiwan:**

3F-1, No.10, Lane 609,  
Chongxin Road, Section 5,  
Sanchong Dist, New Taipei  
City 241405, Taiwan  
Tel: +886-2-29998261

**USA & Canada:**

530 Technology Dr.  
Suite 100, Irvine,  
CA 92618, USA  
Tel: +1-949-753-9640

**Spain:**

C/ Proción, 7 portal 2, 1º C  
- Edif. América II  
28023 Madrid, Spain  
Tel: 34-917990403

**Czech Republic:**

TOKOVO Jankovcova  
1518/2, 170 00, Prague 7,  
Czech Republic  
Tel: +420-266-782040