

NexusLink 5631/5631E

ADSL2+ Bonded Router



COMTREND
Leading the Communication Trend



Description

The NexusLink 5631/5631E ADSL2+ Bonding Router has four 10/100 Ethernet, 802.11g wireless LAN, dual ADSL line and USB interfaces.

It shall have full routing capabilities to segment/route IP protocol and bridging functions. By software configuration, router or bridge mode can be selected.

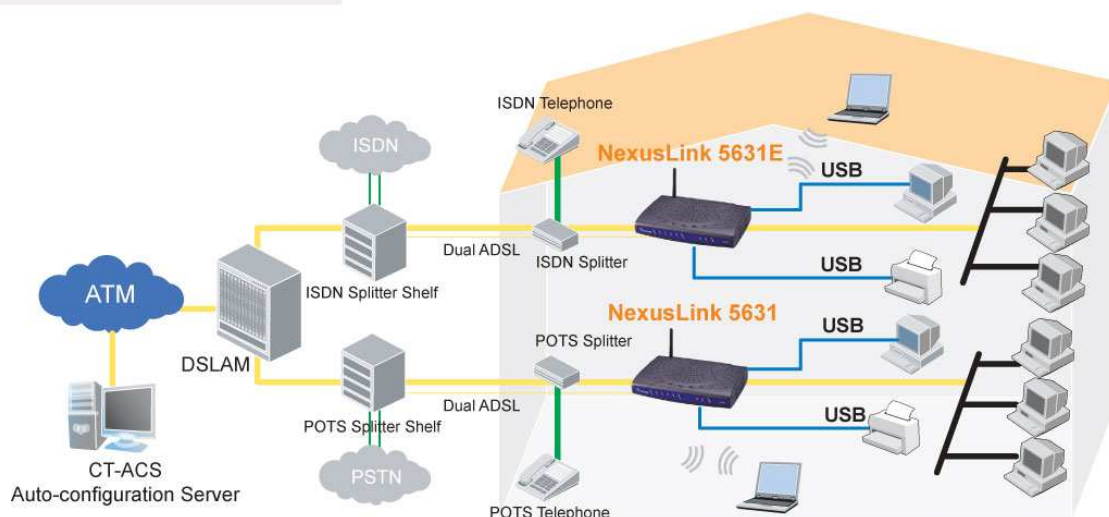
The NexusLink 5631 provides a single box solution for deploying Triple Play architectures, doubles the bandwidth (48Mbps) performance over traditional ADSL2+ modems, high performance Router, Security, VPN, Management and flexible networking options including a wireless access point.

The CT-5631 is for ADSL over POTS (Annex A) while the CT-5631E is optional for ADSL over ISDN (Annex B).

Features

- NexusLink 5631 (Annex A)
- NexusLink 5631E (Annex B)
- Two-line ADSL2+ bonded
- Wi-Fi support
- UPnP
- Integrated 802.11g AP (backward compatible with 802.11b)
- WPA and 802.1x
- RADIUS client
- IP /MAC address filtering
- Static route/RIP/RIP v2 routing functions
- Dynamic IP assignment
- NAT/PAT
- IGMP Proxy and fast leave
- DHCP Server/Relay/Client
- DNS Relay
- Auto PVC configuration
- Supports 16 VCs
- Embedded SNMP agent
- Web-based management
- Remote configuration and upgrade
- Supports TR-069/TR-098/TR-111 for Remote Management
- Configuration backup and restoration
- FTP server/TFTP server

Applications Diagram



NexusLink 5631/5631E

ADSL2+ Bonded Router



Specifications

Hardware Interface

RJ-11 X1 for ADSL2+ bonded, RJ-45 X 4 for LAN, Reset Button X 1, Power switch X 1, 1x USB host, 1x USB device, Wi-Fi Antenna x 1

WAN Interface

ADSL standard ITU-T G.992.5, ITU-T G.992.3, ITU-T G.992.1, ANSI T1.413 Issue 2, AnnexM
ADSL2+ Bonded ITU-T G.998.1 Downstream : 48 Mbps Upstream : 2.6 Mbps

LAN Interface

Standard IEEE 802.3, IEEE 802.3u
10/100 BaseT Auto-sense
MDI/MDX support Yes

WLAN Interface

Standard IEEE802.11g, backward compatible with 802.11b
Encryption 64, 128-bit Wired Equivalent Privacy (WEP) Data

Encryption

Channels 11 Channels (US, Canada)/ 13 Channels (Europe)/ 14 Channels (Japan)
Data Rate Up to 54Mbps
WPA Yes
IEEE 802.1x Yes

ATM Attributes

RFC 2364 (PPPoA), RFC 2684 (RFC 1483) Bridge/Route; RFC 2516 (PPPoE); RFC 1577 (IPoA)
Support PVCs 16
AAL type AAL5
ATM service class UBR/CBR/VBR
ATM UNI support UNI3.1/4.0
OAM F4/F5 Yes

Management

TR-069, TR-098, TR-111, SNMP, Telnet, Web-based management, Configuration backup and restoration
Software upgrade via HTTP, TFTP server, or FTP server

Bridge Functions

Transparent bridging and learning IEEE 802.1d
Port-based VLAN support Yes
Spanning Tree Algorithm Yes
IGMP Proxy Yes

Routing Functions

Static route, RIP, and RIPv2, NAT/PAT, DHCP Server/DHCP Relay, DNS Relay, ARP

Security Functions

Authentication protocols PAP, CHAP,
TCP/IP/Port filtering rules, Port triggering/Forwarding, Packet and MAC address filtering, access control, SSH

Application Passthrough

PPTP, L2TP, IPsec, VoIP, Yahoo messenger, ICQ, RealPlayer, NetMeeting, MSN, X-box, etc

Power Supply

External power adapter 100-240Vac

Environment Condition

Operating temperature 0 ~ 50 degrees Celsius
Relative humidity 5 ~ 95% (non-condensing)

Dimensions

205 mm (W) x 48 mm (H) x 145 mm (D)

Kit Weight (1*NexusLink 5631, 1* RJ-14 cable, 1* RJ-45 cable, 1* USB cable, 1* Power Adapter, 1* CD-ROM)
0.98 KG

Note: Specifications are subject to change without notice.

Taiwan:

3F-1, No.10, Lane 609, Chung Hsin Road Section 5, San Chung, Taipei, Taiwan 24159
Tel: 886-2-2999-8261
Fax: 886-2-2999-8497

China:

NO.88 East QianJin Road,Kunshan City,JiangSu,China
Tel: 86-512-57383156, 86-512-57383157,
86-512-57384515
Fax: 86-512-57383155

Spain:

Edif. América II C/Prócion,7 portal 3 bajo H 28023 Madrid, Spain
Tel: 34-917990403
Fax: 34-913510999

UK:

566 Chiswick High Road Building 3, Chiswick Park Chiswick - London, W4 5YA UK
Tel: 44-0-8453701031
Fax: 44-0-8453701032

France:

8, Rue Edouard Naud
92130 Issy-Les-Moulineaux, France
Tel: 33-1-78463600
Fax: 33-1-78463601

Czech Republic:

TOKOVO Jankovcova 1518/2, 170 00, Prague 7, Czech Republic
Tel: 420-266-782040
Fax: 420-266-782990

USA & Canada:

16 Goodyear, Suite 120, Irvine, CA 92618
Tel: 1-949-7539640
Fax: 1-949-7539020

Brazil:

Al. Campinas, 977 - 7º. Floor - Room 71 / 72 - Jardins
Zip Code: 01404-001 - São Paulo - SP - Brazil
Tel: 00 55 11 3052-2295
Fax: 00 55 11 3052-2295

Mexico:

Mariano Escobedo 396 Office 503 Colonia Anzures, Deleg. Miguel Hidalgo 11590 Distrito Federal México
Tel: +52 (55) 4623-1516



COMTREND CORPORATION

Global contact: sales@comtrend.com

Website: www.comtrend.com



DS_CT5631/5631E_R1.1_011508