

Quick Install Guide

VD-21IRVF | Remote Zoom Dome IP Camera

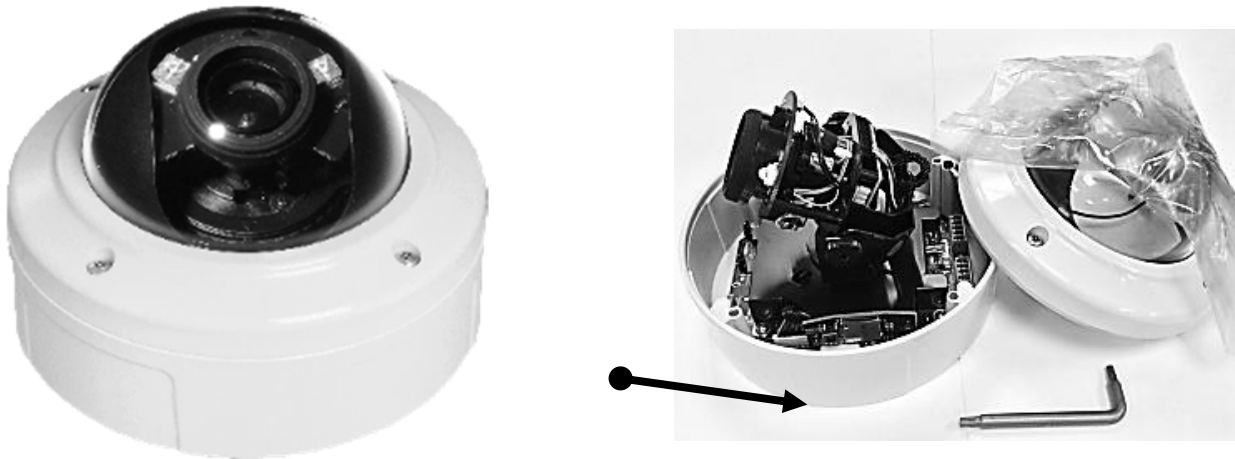
A Package Contents

1. Network Camera
2. Tools package (Screw Kit)
3. CD (Software, Manual,...etc.)
4. Quick Installation Guide



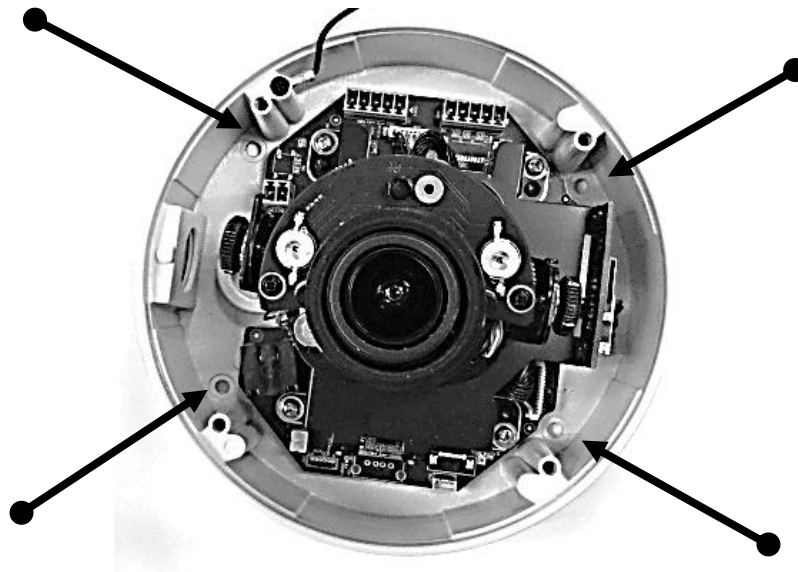
B Installation

1. Remove the front cover by using the screw driver as the below arrow shows.

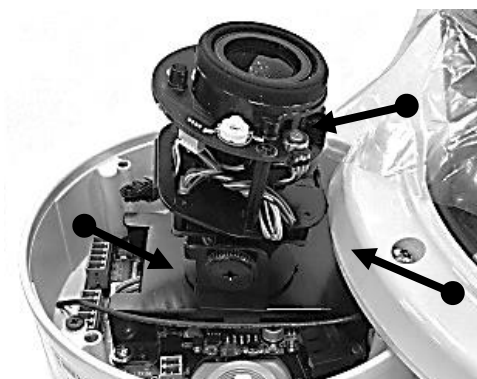


* It comes from the tools package.

2. Fix the camera on the wall or ceiling with the supplied screws, and twist viewing angle as you desire.



3. Adjust the tilt angle and focus as you desire.

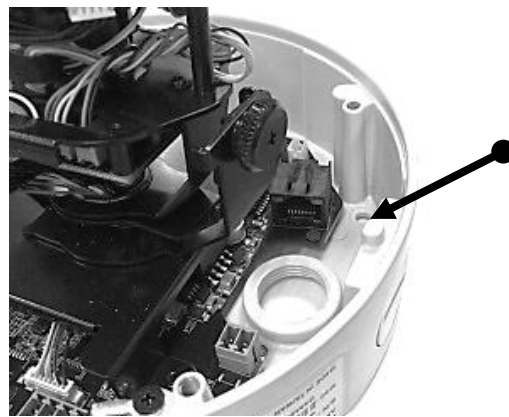


4. Connect this network camera to a *PoE switch or PoE injector, or DC 12V power resource. Make sure all connections are stable.



* This network camera supports both PoE power or DC12V power.

5. Connect the network cable to network camera.



6. Re-mount the cover and tighten it.



7. Make sure to keep the network camera cover closed and the network cable output is at its correct location.



* Two output selections as you desire.



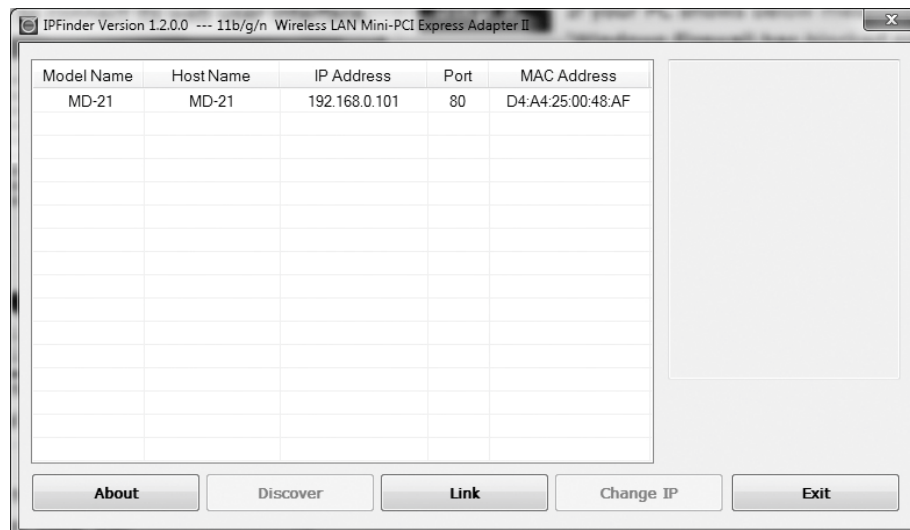
Accessing Your New Camera

You can access your network camera by its web interface via web browser. Use the utility named 'IPFinder.exe' from the CD to find the IP address of the camera.

- * The new network camera's default IP address setting is DHCP mode.
- * The new network camera's default IP address: 192.168.1.99 if no IP address is provided.

1. Open 'IPFinder.exe' and press the 'Discover' button to search for all cameras within your local network. Press the 'Link' button to connect to a camera's web interface.

- * Make sure all cameras are powered on and connect to local network.



2. If you need to change the camera's IP address, click 'Change IP' button on your selected camera to change the camera's IP address.



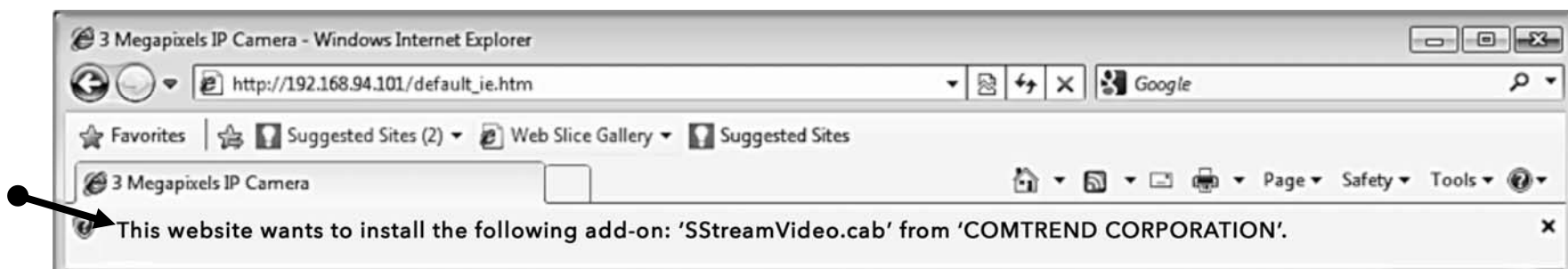
3. Connect to the camera's web interface and install ActiveX plugin. The user login screen will appear when connection is established.



- * The default Username and Password are both "admin."



4. When accessing your camera, click on the indication bar of "Install This Add-on for All Users on This Computer..." to install the ActiveX plugin. Then, click 'Allow' to install ActiveX plugin.



*Recommend using IE 9.x or later browsers.



5. If your PC shows the message 'Windows Firewall has blocked some features of this program', please click 'Allow access', or the camera may not be function properly.



6. When you're installing the IE plugin, you may also be prompted that if you want to allow changes to be made to your computer. Click 'Yes' to allow changes.

7. After installation of ActiveX plugin, you should be able to see the video stream from the camera.

* For more advanced configuration features, refer to the User Manual on the included CD.



D Your device is now connected!

NOTE: For instructions on advanced features, FAQ, etc., please visit our online Product Webpage:

<http://us.comtrend.com/products/public/product/home-networking/VD21IRVF>

For more information: Facebook: <https://facebook.com/Comtrend>
 Website: <http://us.comtrend.com/>
 Support: Visit our website or call 1-877-COMTREND
 (1-877-266-8736)