

## Quick Install Guide

MB-21IR | Outdoor Bullet IP Camera

### A

#### Package Contents

1. Network Camera
2. Sun shield
3. Tools package (Screw Kit)
4. CD (Software, Manual...etc.)
5. Quick Installation Guide



### B

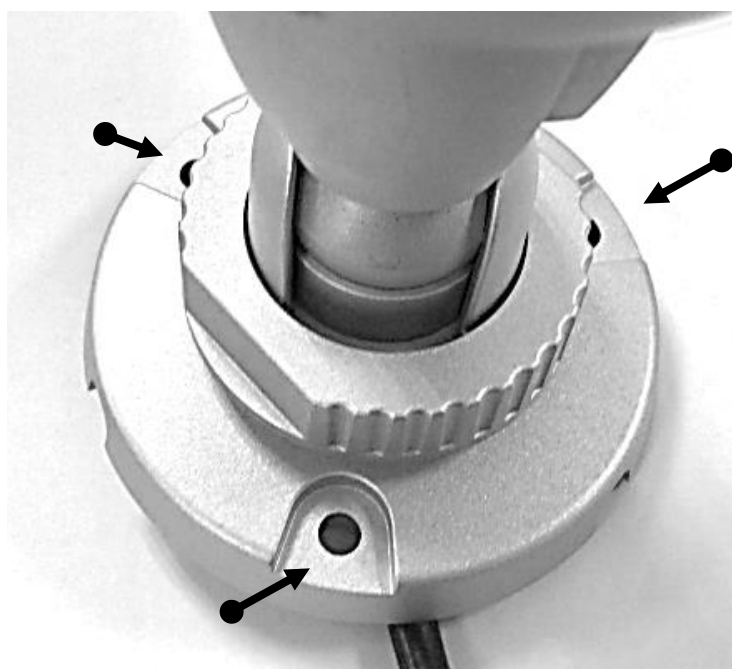
#### Installation

Please follow the below instructions to setup your network camera.

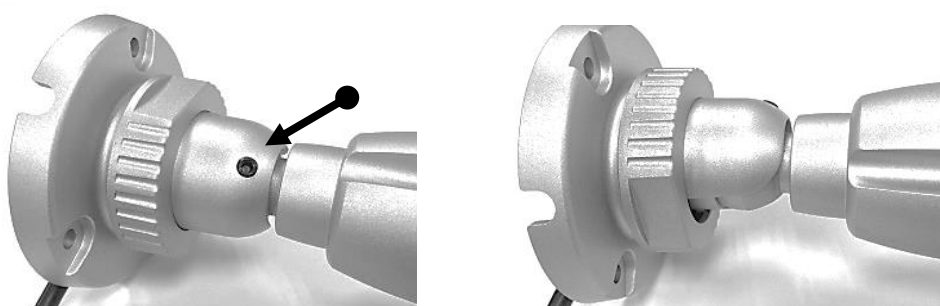
1. Attached the sun shield to the network camera. Then tighten it up with the supplied screws.



2. Fix the camera on the wall or ceiling with supplied screws.



3. Adjust viewing angle by loosening up below the spot first.



4. Connect this network camera to a \*PoE switch, PoE injector, or DC 5V adapter. Make sure all connections are stable.



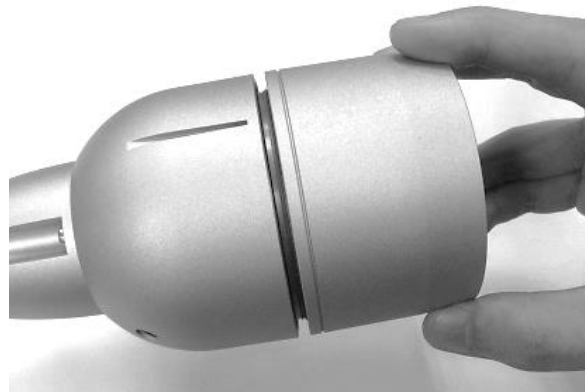
\* The network camera supports both PoE power or a DC 5V adapter.

5. Connect the network cable to the network camera.

DC 5V



6. Re-mount the cover and tighten it.



7. Make sure the network camera cover is closed and the network cable output is at the correct location.





## Accessing Your New Camera

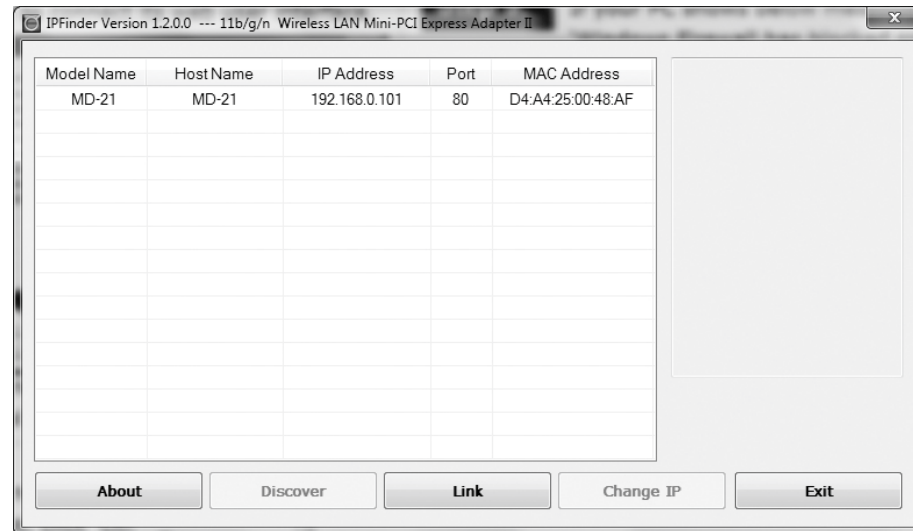
You can access your network camera by its web interface via web browser. Use the utility named 'IPFinder.exe' from the CD to find the IP address of the camera.

\* The new network camera's default IP address setting is DHCP mode.

\* The new network camera's default IP address: 192.168.1.99 if no IP address is provided.

1. Open 'IPFinder.exe' and press the 'Discover' button to search for all cameras within your local network. Press the 'Link' button to connect to a camera's web interface.

\* Make sure all cameras are powered on and connect to local network.



2. If you need to change the camera's IP address, click 'Change IP' button on your selected camera to change the camera's IP address.



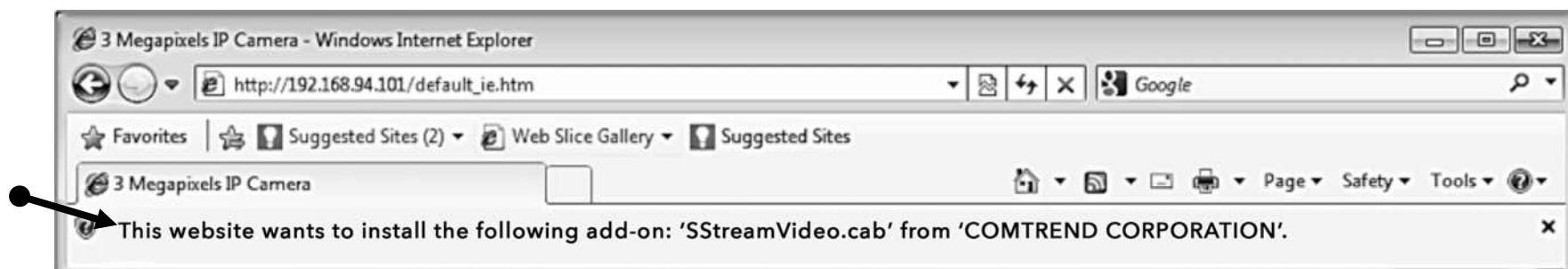
3. Connect to the camera's web interface and install ActiveX plugin. The user login screen will appear when connection is established.



\* The default Username and Password are both "admin."



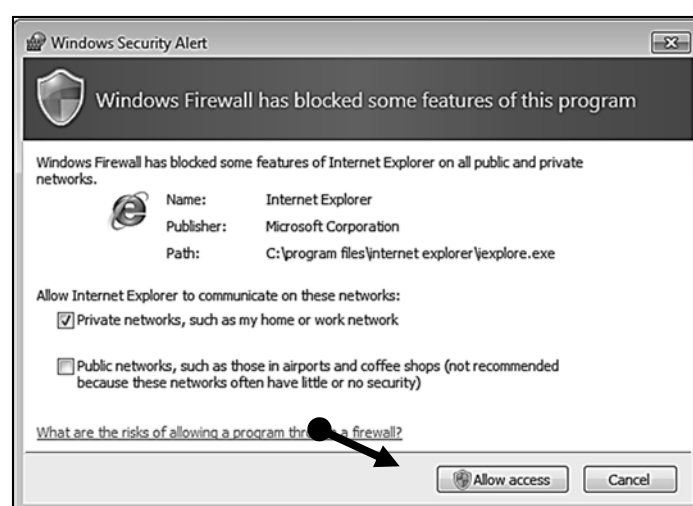
4. When accessing your camera, click on the indication bar of "Install This Add-on for All Users on This Computer..." to install the ActiveX plugin. Then, click 'Allow' to install ActiveX plugin.



\*Recommend using IE 9.x or later browsers.



5. If your PC shows the message 'Windows Firewall has blocked some features of this program', please click 'Allow access', or the camera may not be function properly.



6. When you're installing the IE plugin, you may also be prompted that if you want to allow changes to be made to your computer. Click 'Yes' to allow changes.

7. After installation of ActiveX plugin, you should be able to see the video stream from the camera.  
\* For more advanced configuration features, refer to the User Manual on the included CD.



**D** Your device is now connected!

NOTE: For instructions on advanced features, FAQ, etc., please visit our online Product Webpage:

<http://us.comtrend.com/products/public/product/home-networking/MB21IR.html>

For more information: Facebook: <https://facebook.com/Comtrend>  
Website: <http://us.comtrend.com/>  
Support: Visit our website or call 1-877-COMTREND  
(1-877-266-8736)