

# PLC + WiFi 11ac dual-band

G.hn PLC | Passthrough with MIMO |

802.11ac | Concurrent DB 2T2R | WiFi Bridge

## PG-9072

## Powerline Ethernet + WiFi 11ac Adapter



The PowerGrid 9072 is designed to meet the growing demand for perfect connectivity and coverage across multiple devices connected concurrently throughout the home. The G.hn Powerline Wi-Fi Extender wall plugs allow users to take Wi-Fi with them anywhere throughout the home or backyard and enjoy a seamless wireless experience.

The PowerGrid 9072 supports Multiple Input/Multiple Output (MIMO) operation based on G.9963 over power line. It can be used with two fully programmable reception and transmission paths to attain up to 800Mbps PHY rates. Also, combining Celeno's CL1860 and CL2200 chips utilizes the concurrent dual band Wi-Fi module, driving the G.hn Powerline Wi-Fi Extenders, enabling them to leverage both the 2.4GHz and 5 GHz bands to deliver a seamless wireless experience anywhere in the home. Celeno's smart Wi-Fi technology OptimizAIR 2.0 will also enable the virtualization of Wi-Fi resources, so that Wi-Fi capacity can be dynamically apportioned and provisioned to different devices, services and applications.

### FEATURES

- **G.hn MIMO Performance**

Supports ITU-T G.hn baseband plans 50 and 100 MHz and MIMO techniques for powerline (based on G.9963) boosting PLC throughput up to 800 Mbps PHY rate over powerline.

- **Concurrent Dual Band 11ac**

Celeno's CL1860 and CL2200 chips utilizing concurrent dual band 2T2R Wi-Fi interfaces, leverage both the 2.4GHz and 5 GHz bands to deliver a seamless wireless experience anywhere in the home.

- **Seamless Load balance**

Powered by Celeno's band-steering technology, the G.hn Powerline Extender seamlessly balances devices amongst the dual Wi-Fi bands.

- **Smart Wi-Fi Technology OptimizAIR 2.0**

OptimizAIR 2.0 ensures the higher capacity and superior QoS required for a distributed home network with multiple nodes.

- **Simple PLC Pairing, Plug & Play**

G.hn power line supports quick and easy connections with embedded plug-and-play, no extra configuration required!

- **A WPS button Enables Rapid Self-install**

A WPS button supports multiple functions for rapid self-installation, including authentication of associated stations, and performs SSID and WiFi credential from the main HGW.

# PowerGrid Series PG-9072

G.hn PLC | Wall-Plug with MIMO | Concurrent DB 2T2R 11ac| WiFi Bridge

## SPECIFICATIONS

### Interface

- RJ-45 X 1 for GE Ethernet
- LED Indicators: G.hn, 2.4GHz, 5.0GHz, LAN, PWR
- Buttons: G.hn pairing, WPS, WiFi ON/OFF, RESET
- Internal WiFi Antenna X 2

### G.hn (PLC)

- Marvell 88LX3142 + 88LX2718
- ITU-T G.9960 & G.9961 compliant
- G.hn MIMO support
- NDIM support

### WLAN (WiFi)

- Celeno CL1860 + CL2200
- WiFi OptimizAIR 2.0
- 802.11 b/g/n @2.4 GHz, 2T2R
- 802.11 a/n/ac @5GHz, 2T2R, external FEM
- Concurrent 2.4GHz & 5GHz
- DFS @5GHz

### Management

- HTTP Web-based
- Single TR-069 entity for G.hn & WiFi functions
- TR-069 over IPv4/v6 dual stack

### Power

- 110-240 VAC 50Hz/60Hz

### Environment Condition

- Operating temperature: 0 ~ 40 degrees Celsius
- Relative humidity: 8 ~ 95% (non-condensing)

### Dimensions

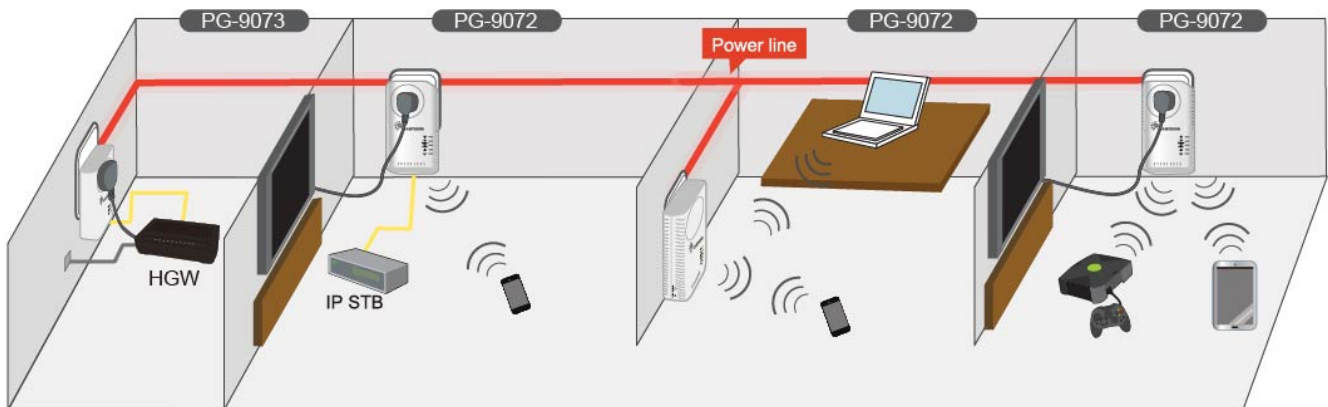
- EU version: 150 mm(H)x 80 mm(W) x 43 mm(D)

### Certifications

- CE, ITU-T G.hn Standard

Note: Specifications are subject to change without notice.

## Applications Diagram



**COMTREND CORPORATION**

#### Taiwan:

COMTREND CORPORATION  
No. 100, Sec. 2, Ring Rd., Taipei 106, Taiwan  
Tel: +886-2-2652-1234

#### USA & Canada:

530 Technology Dr. Suite 100 Irvine, CA  
92618 USA  
Tel: +1-949-753-9640

#### Spain:

C/ Proción, 7 portal 2, 1º C - Edif. América II  
28023 Madrid, Spain  
Tel: 34-917990403

#### Czech Republic:

TOKOVO Jankovcova 1518/2, 170 00, Prague 7,  
Czech Republic  
Tel: 420-266-782040