

CT-6102

ADSL2+ VoIP IAD



Description

Comtrend's CT-6102 is a single port, VoIP Integrated Access Device (IAD), providing predictable, real-time, toll-quality voice over the Internet.

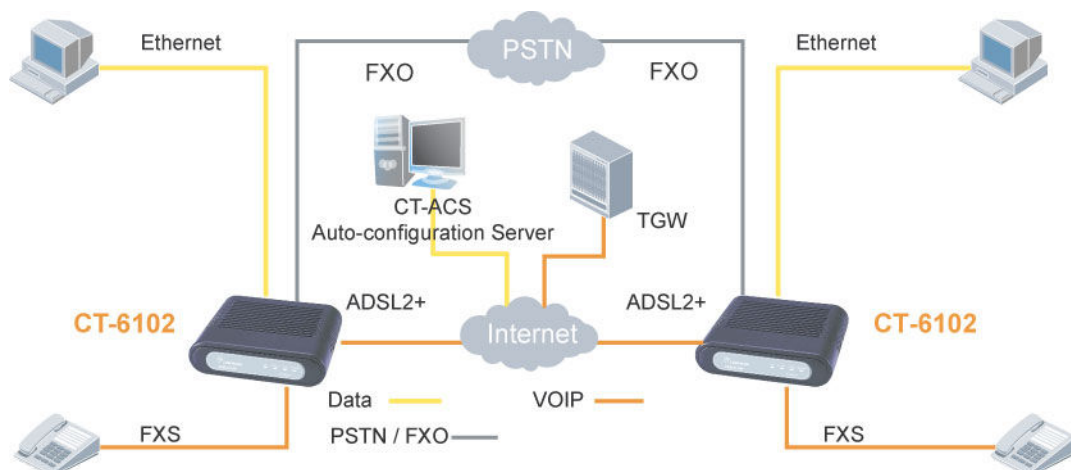
The CT-6102 is for ADSL2/2+ over PSTN. It is designed for residential and business users who need to integrate ADSL2/2+, and VoIP technologies. With ADSL2/2+ broadband technology, the CT-6102 offers users' easy access to the Internet via Ethernet, and provides VoIP via standard analog phones.

The CT-6102 allows calls to be routed to anywhere in the world – significantly reducing or eliminating long distance charges. You can even make phone calls when your PC is turned off. The CT-6102 supports policy based QoS on layer 3, which provides high quality voice service. It also provides a solution for all your network and telephony needs in one integrated unit, which reduces space requirements, and the cost of hardware and cabling. This makes CT-6102 the most cost effective solution for your application. The CT-6102 is also designed with TR-068 compliant color panel and LED indicators making it more user friendly.

Features

- ADSL2/2+ VoIP and Router Integrated
- Supports emergency call
- Supports life line: PSTN alive when power off
- Supports Quality of Service (QoS) for voice
- Supports caller ID presentation and restriction
- Supports call hold
- Supports call waiting
- Supports call forwarding
- Supports call transfer
- Supports 3-way conference
- Supports direct number dialing
- Supports T.38
- Remote administration and automatic remote firmware configuration and upgrade
- Supports VPN Pass-Through
- Supports day-time parental control
- Supports TR-069/TR-098/TR-104/TR-111
- Supports TR-068

Application Diagram



CT-6102

ADSL2+ VoIP IAD



Specifications

Hardware Interface

FXSx1, RJ-11x1 for ADSL2+ (Built-in FXO) , RJ-45 x1 for LAN, Reset Buttonx1, Power Switch x1

WAN Interface

ADSL Standard
ITU-T G.992.5, ITU-T G.992.3, ITU-T G.992.1, ITU-T G.992.2, ANSI T1.413 Issue 2
G.992.3(ADSL2) Downstream: Up to 12 Mbps Upstream: 1.3 Mbps
G.992.5(ADSL2+) Downstream: Up to 24 Mbps Upstream: 1.3 Mbps
AnnexM

LAN Interface

Standard IEEE 802.3, IEEE 802.3u
10/100 BaseT Auto-sense
MDI/MDX support Yes

ATM Attributes

RFC 2364, RFC 2684 (RFC 1483) Bridge; RFC 2684 (RFC 1483) Route; RFC 2516; RFC 1577
VCs 8
AAL type AAL5
ATM service class UBR/CBR/VBR
ATM UNI support UNI3.1/4.0
OAM F4/F5 Yes

Management

TR-069/TR-098/TR-104/ TR-111, SNMP, Telnet, Web-based management, Configuration backup and restoration, Software upgrade via HTTP, TFTP client and server, or FTP server

Bridge Functions

Transparent bridging and learning IEEE 802.1d
IGMP Proxy Yes
IGMP Snooping Yes

Routing Functions

Static route, RIP, and RIP v1,v2, NAT/PAT, DHCP Client/Server/Relay, DNS, ARP

Security Functions

Authentication protocols PAP, CHAP
VPN PPTP/L2TP/IpSec pass-through
Stateful Packet Inspection, Packet filtering, Denial Of Service protection, Traffic Conditioning, WFQ-based Bandwidth Management, HTTP proxy

QoS

L3 policy-based QoS, IP QoS, ToS

Voice Functions

SIP RFC 3261
MGCP RFC 3435
Codec G.711, G.723.1, G.726, G.729ab
RTP RFC 1889
SDP RFC 2327
Caller ID ETSI based
Life line/Emergency call Yes
Echo cancellation G.168
Silence suppression Yes

Power Supply

External power adapter 230V to 16.5Vac / 850mA

Environmental Conditions

Operating temperature 0 ~ 50 degrees Celsius
Relative humidity 5 ~ 95% (non-condensing)

Dimensions

140 mm (W) x 36 mm (H) x 132 mm (D)

Kit Weight (1*CT-6102, 1*RJ45 cable, 2*RJ11 cable, 1*Power Adapter, 1*CD-ROM)

0.86 KG

Specifications are subject to change without notice.

Taiwan:

3F-1, No.10, Lane 609, Chung Hsin Road Section 5, San Chung, Taipei, Taiwan 24159
Tel: 886-2-2999-8261
Fax: 886-2-2999-8497

China:

NO.88 East QianJin Road,Kunshan City,JiangSu,China
Tel: 86-512-57383156, 86-512-57383157,
86-512-57384515
Fax: 86-512-57383155

Spain:

Edif. América II C/Prócion,7 portal 3 bajo H 28023 Madrid, Spain
Tel: 34-917990403
Fax: 34-913510999

UK:

566 Chiswick High Road Building 3, Chiswick Park Chiswick - London, W4 5YA UK
Tel: 44-0-8453701031
Fax: 44-0-8453701032

France:

87, Rue du Gouverneur Général Félix Eboué 92130 Issy-les-Moulineaux, France
Tel: 33-1-70715700
Fax: 33-1-70715701

Czech Republic:

TOKOVO Jankovcova 1518/2, 170 00, Prague 7, Czech Republic
Tel: 420-266-782040
Fax: 420-266-782990

USA & Canada:

16 Goodyear, Suite 120, Irvine, CA 92618
Tel: 1-949-7539640
Fax: 1-949-7539020

Brazil:

Al. Campinas, 977 - 7°. Floor - Room 71 / 72 - Jardins
Zip Code: 01404-001 - São Paulo - SP - Brazil
Tel: 00 55 11 3052-2295
Fax: 00 55 11 3052-2295

Mexico

Mariano Escobedo 396 Office 503 Colonia Anzures, Deleg. Miguel Hidalgo 11590 Distrito Federal México
Tel: +52 (55) 4623-1516



COMTREND CORPORATION

Global contact: sales@comtrend.com

Website: www.comtrend.com



DS_CT6102_R1.4_042208